

# Louisiana Statewide Transportation Plan Update



## Advisory Council Meetings – Round One Baton Rouge, LA

March 20-21, 2013

**CDM  
Smith**

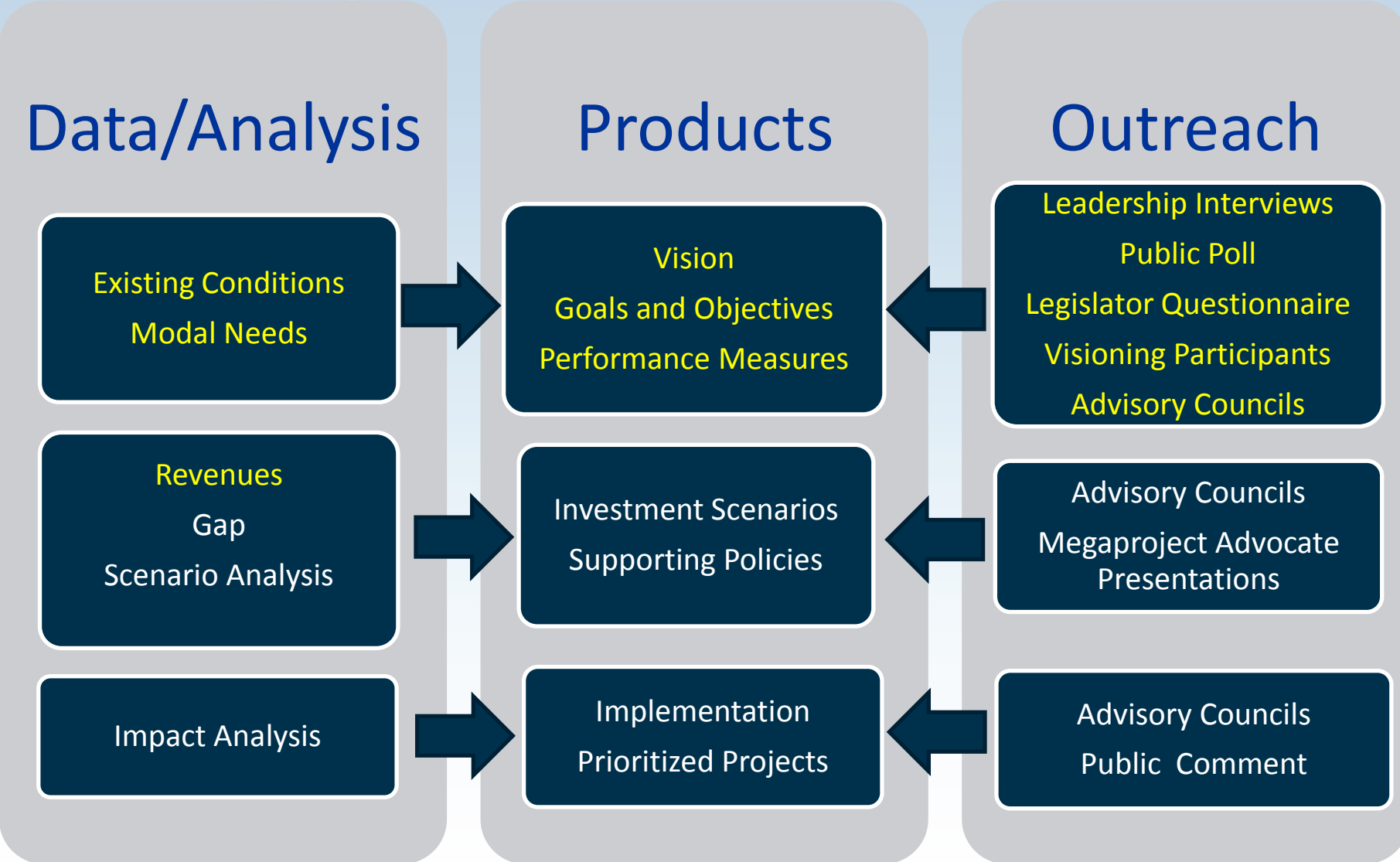
# Agenda

- **Update of the Statewide Transportation Plan**
  - About the Plan (Outcomes, Process, Roles)
  - Outreach Conducted to Date (Interviews, Questionnaire, Poll, Workshop)
  - Draft Vision and Goals
  - Questions?
- **Transportation in Louisiana – Overview**
  - The system
  - Current transportation conditions
  - Overview of issues
    - Global
    - By Relevant Goal Area
  - Questions?
- **Break and Then to Advisory Council Meeting**

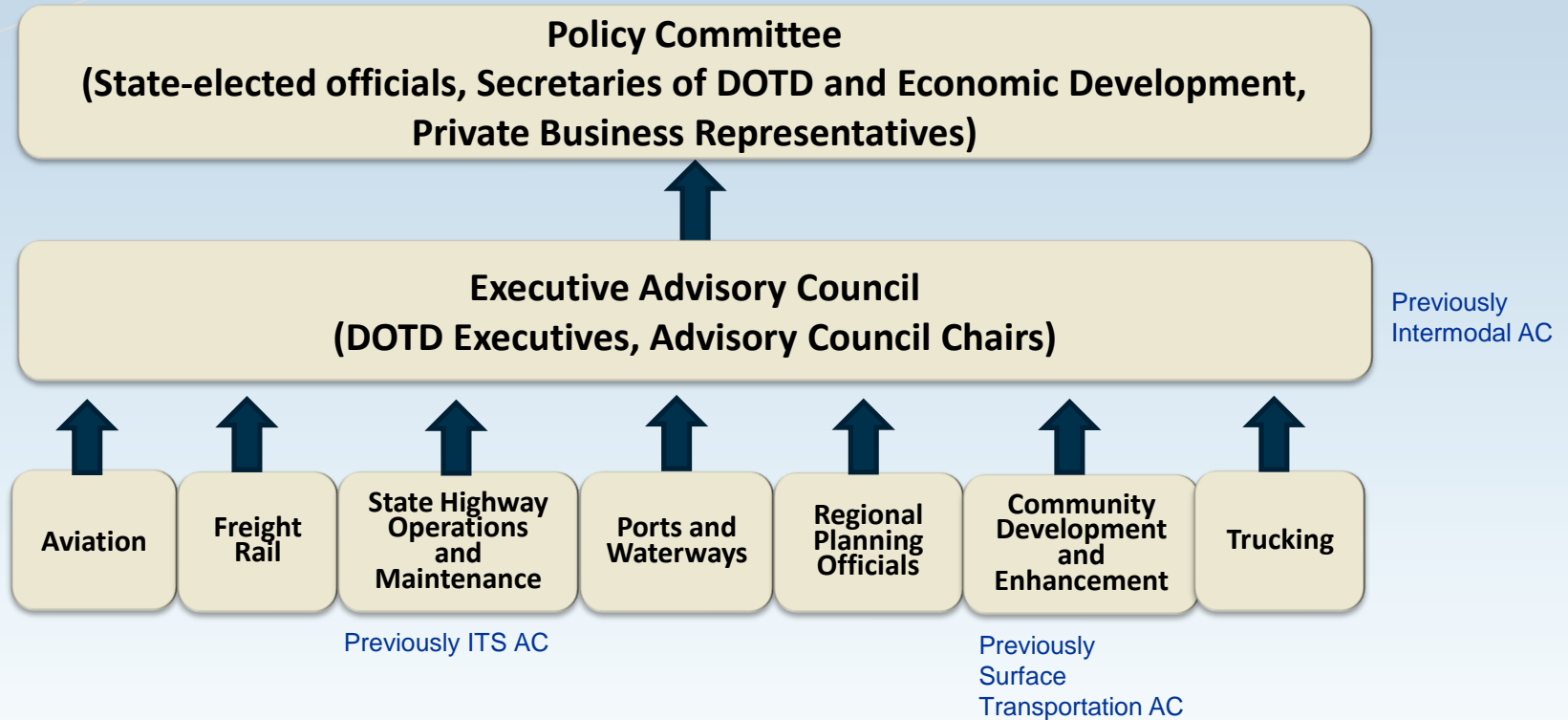
# About the Plan – Intended Outcomes

- Performance-based planning focus
- Identification of investments policies and programs most important to Louisiana
- Includes:
  - Multimodal plan
  - Separate plans for aviation and rail
  - Statewide travel demand model

# About the Plan - Process



# About the Plan – Decision-Making Process



# About the Plan – DOTD Roles

	Owner-Operator	Partner
Highways & Bridges	●	
Ports		●
Aviation		●
Rail		●
Transit		●
Non-motorized		●

# Outreach Conducted to Date

- **DOTD Leadership Interviews**
  - Early in Process, Discussed Issues and Needs
- **State Legislative Questionnaire**
  - On-line web-based survey conducted in July 2012
  - Questions related to priorities and funding issues
  - 48 legislators completed the survey
- **Public Telephone Poll**
  - Scientific survey conducted in August 2012
  - Questions related to perceptions and priorities
  - 1,013 surveys completed
- **Visioning Workshop**
  - November 2012 – 29 participants from DOTD, FHWA, MPOs, LED, airports, ports, rail
  - Discussed land use and economic development scenarios as well as goals

# DOTD Interviews – Top Transportation Priorities

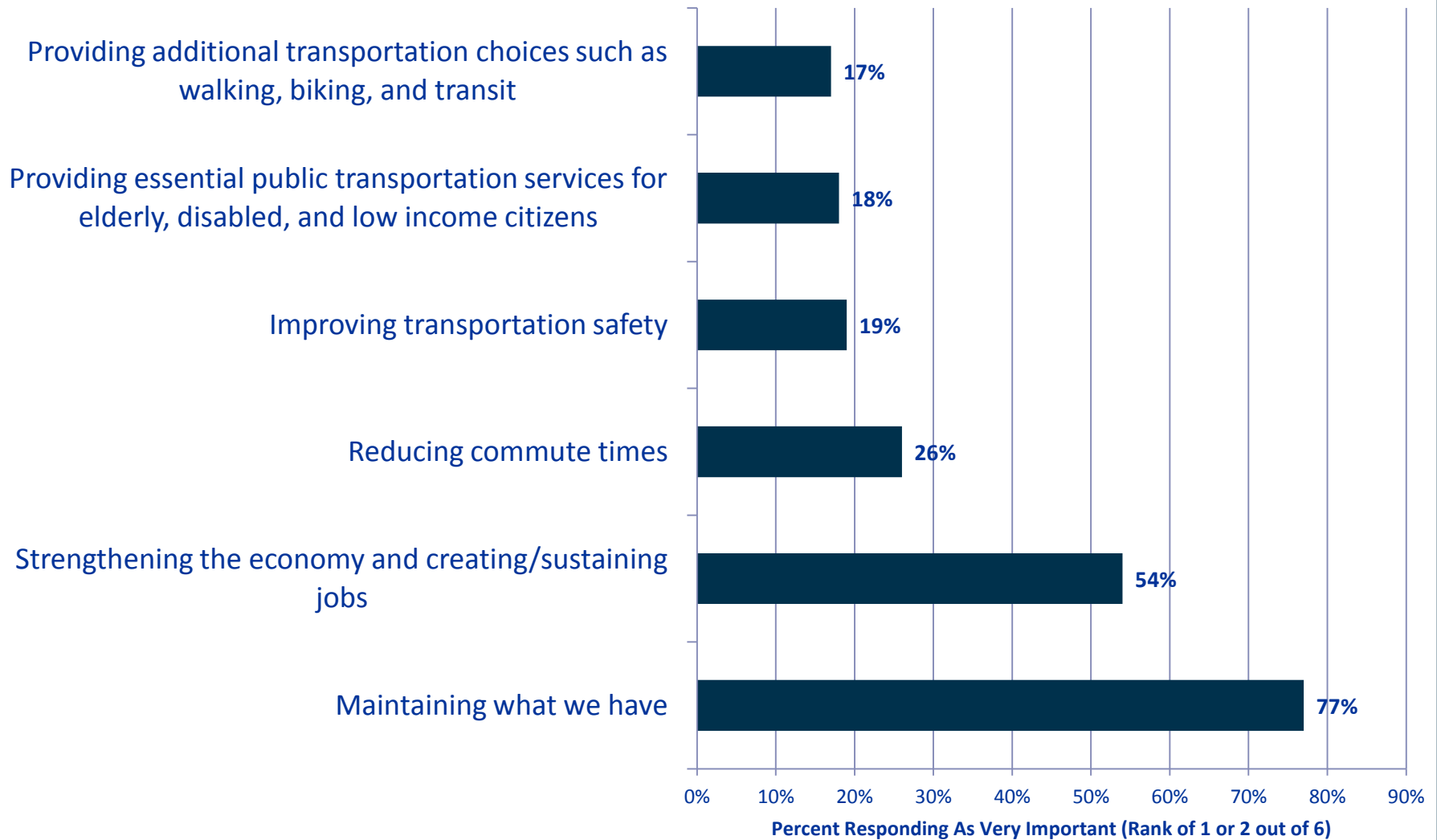
- Asset management
- Bottlenecks
- Transportation and the economy
- DOTD strategic goals
- Other modes (transit, rail)
- Achievable projects
- Corridor focus



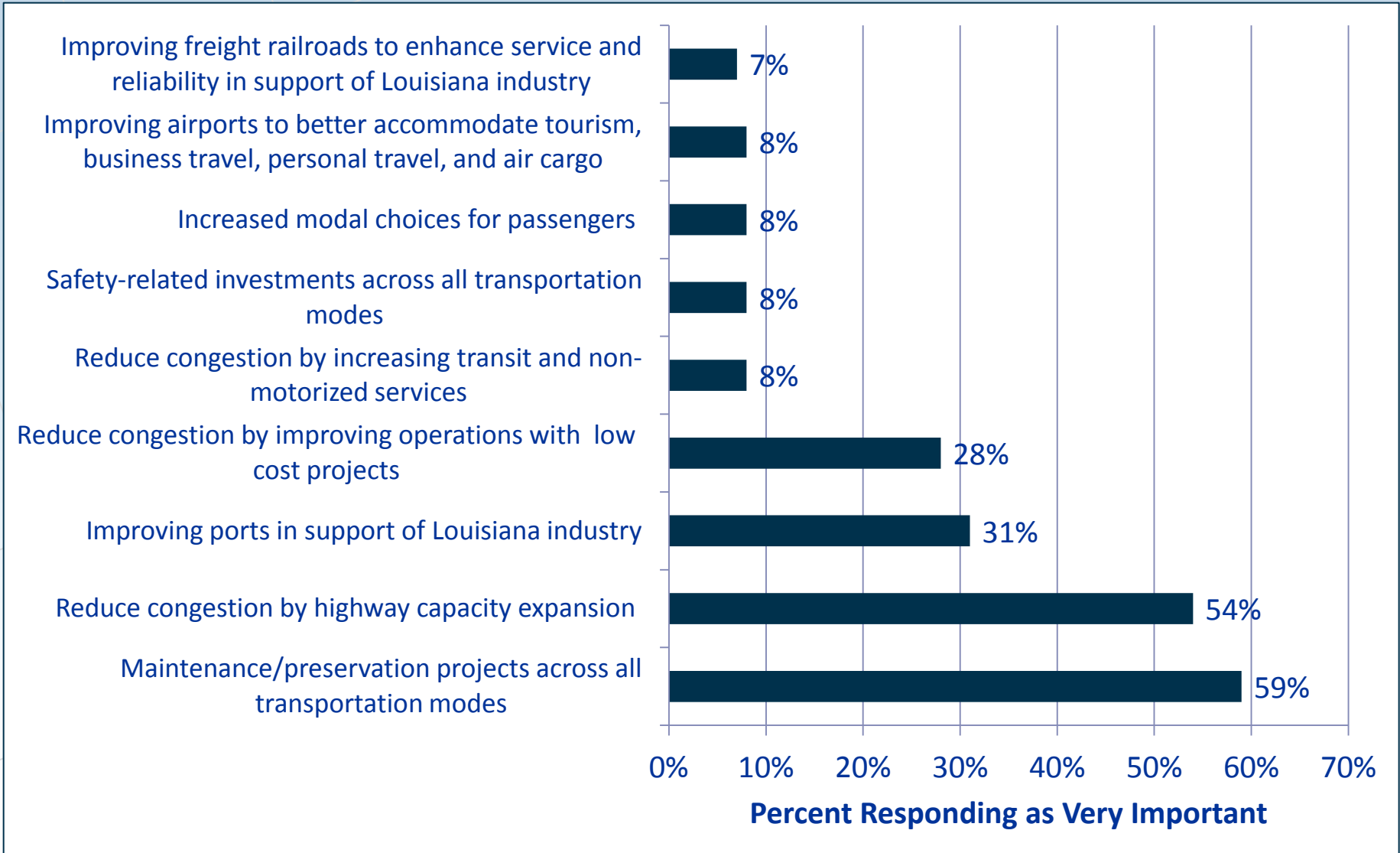
# DOTD Interviews – What Must Change

- Add capacity to key facilities
- Emphasize growth management
- Connections
- Intergovernmental cooperation
- New funding sources

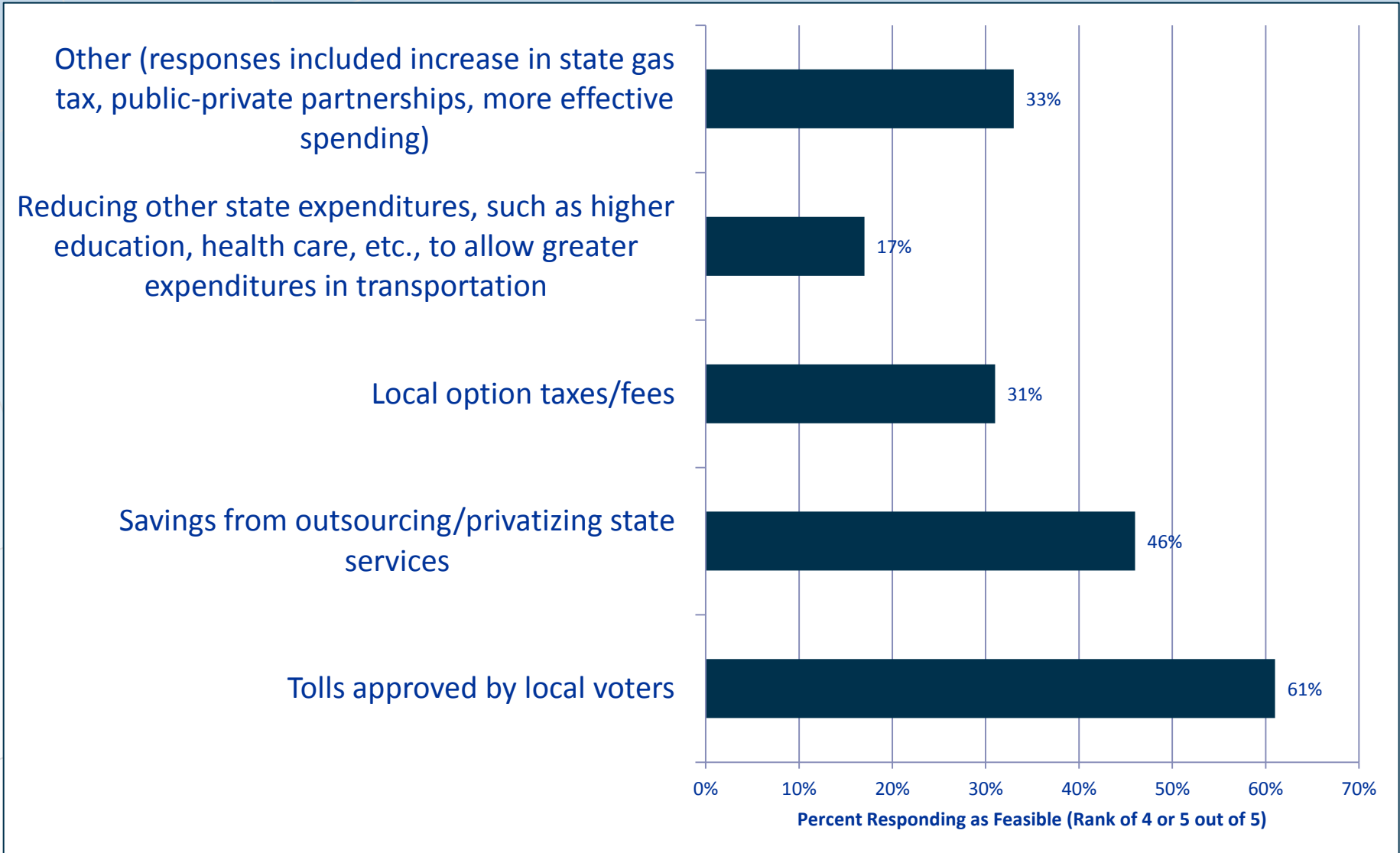
# Legislative Questionnaire – Where Funding Should Go



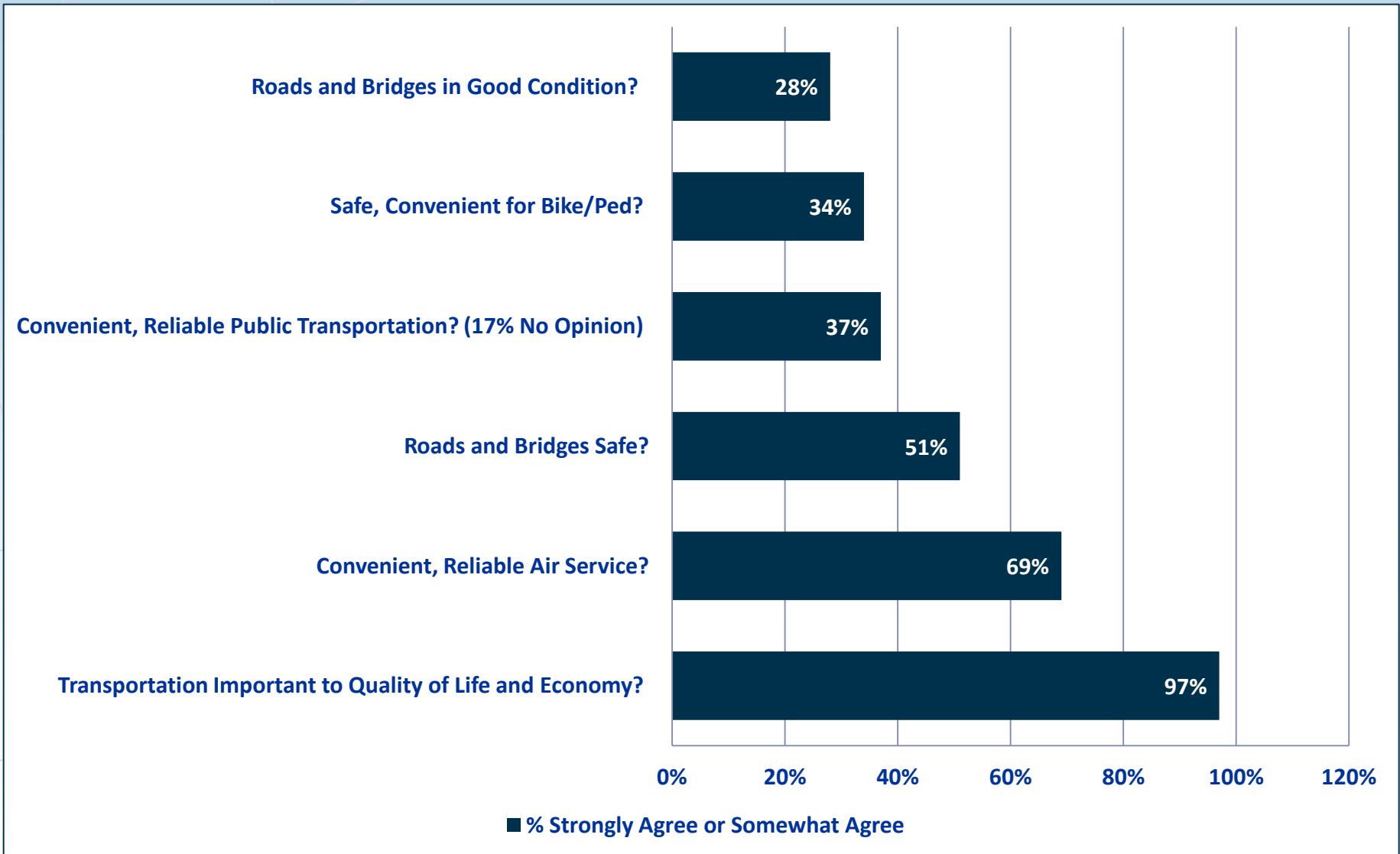
# Legislative Questionnaire – Type Projects Most Needed



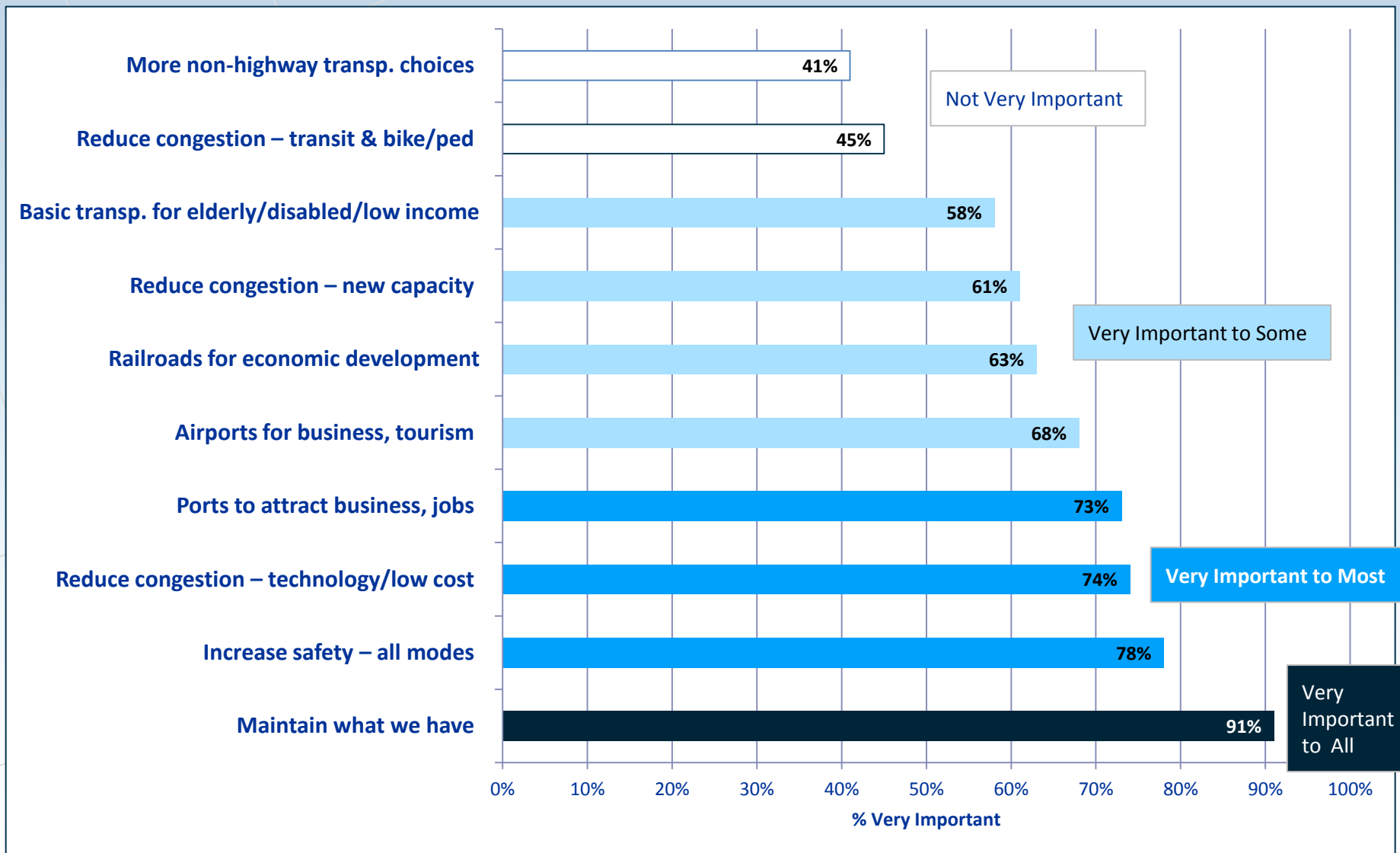
# Legislative Questionnaire – Feasible Funding Options



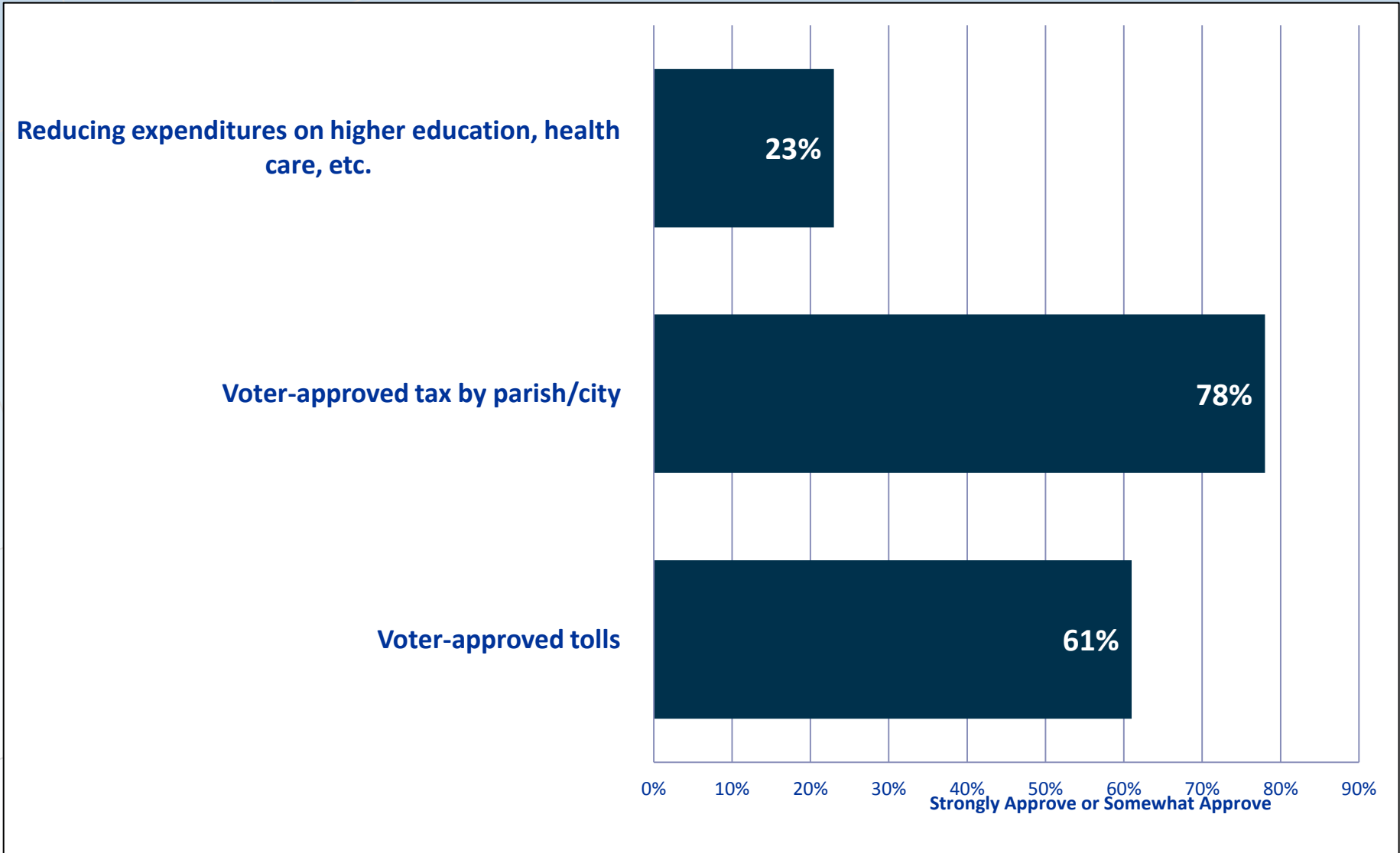
# Public Survey – Broad Impressions



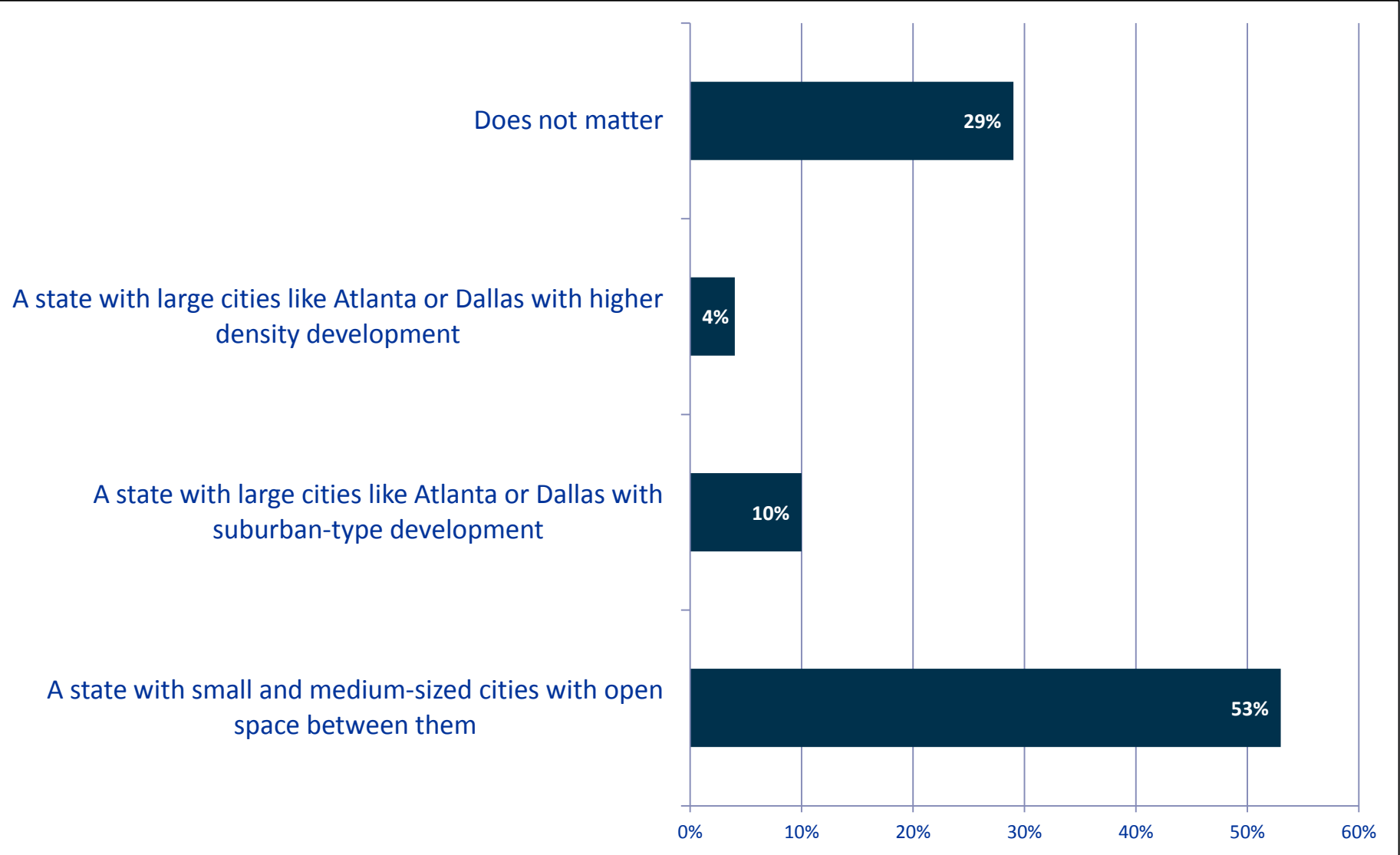
# Public Survey – Importance of Investments



# Public Survey – Revenue Options



# Public Survey – Future Land Use Patterns





# Visioning Workshop – Key Outcomes

- **Land Use**
  - Most likely scenario is status quo of continued suburban development BUT preferred scenario is Town Centers with growth in small to mid-size cities and towns with quality green space in-between except for New Orleans that has growth concentrated in urban areas
- **Economic Development**
  - Preferred scenario is continuation of focus on extractive and resource industries (a current focus in the state), but with more emphasis on arts/retirement/tourism as well as research/technology developments
- **Policy Shift**
  - The preferred scenarios require changes in public policy and state/federal/local cooperation
- **Goals**
  - Streamline existing 7 goals and 49 objectives

# Draft Vision and Goals

- Vision:

- **Mostly small and medium-sized communities** with quality open space in-between
- But also **higher-growth, dense, compact urban areas** such as New Orleans
- Support **extractive and resource industries**, a major economic driver in the state
- Consider and support the potential for increased economic activity associated with **arts, entertainment, retirement and tourism as well as a research & technology** focus

- Goals:

- Infrastructure Preservation and Maintenance
- Safety
- Economic Competitiveness
- Community Development and Enhancement
- Environmental Stewardship

# Draft Goals and Objectives

## Infrastructure Preservation and Maintenance

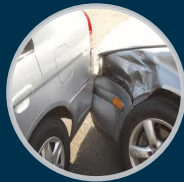


*Preserve Louisiana's multimodal infrastructure in a state of good repair through timely maintenance of existing infrastructure*

### Objectives

- Keep Louisiana's highway pavement in good condition
- Keep Louisiana's bridges in good condition
- Keep Louisiana's other highway-related assets in good condition
- Assist modal partners in achieving state-of-good repair for transit, port, and aviation facilities

## Safety



*Provide safe and secure travel conditions across all transportation modes through physical infrastructure improvements, operational controls, programs, and public education and awareness*

### Objectives

- Reduce number and rate of highway-related fatalities and injuries
- Reduce number of highway crashes
- Reduce number of pedestrian and bicycle accidents
- Assist modal partners in achieving safe and secure transit, port, and aviation facilities

# Draft Goals and Objectives (cont.)

## Economic Competitiveness



*Provide a transportation system that fosters diverse economic and job growth, international and domestic commerce, and tourism*

### Objectives

- Improve level of service of freight transportation throughout Louisiana
- Improve access to intermodal facilities and the efficiency of intermodal transfers
- Provide predictable, reliable travel times throughout Louisiana
- Improve connectivity between town centers and urban areas throughout Louisiana

## Environmental Stewardship



*Ensure transportation policies and investments are sensitive to Louisiana's environmental issues*

### Objectives

- Minimize the environmental impacts of building, maintaining and operating the state transportation system
- Comply with all federal and state environmental regulations

# Draft Goals and Objectives (cont.)

## Community Development and Enhancement



*Provide support for community transportation planning, infrastructure and services*

### Objectives

- Cooperate with and support MPOs and other local agencies in development of plans, including comprehensive Plans, and programs to ensure consistency with statewide goals, needs and priorities
- Provide support to local governments to seek sustainable revenue for local transportation needs
- Reduce barriers to state and local collaboration
- Enhance access to jobs for both urban and rural populations
- Improve modal options associated with supporting the economy and quality of life

# Draft Performance Measures

## • DIRECT MEASURES

- Percent of State Highway System meeting pavement condition targets, by system tier
- Percent of structurally deficient bridges by system tier
- Condition/ grade of traffic control devices, other assets
- Actual ferry operating hours vs. planned

## • INDIRECT MEASURES

- Percent of Public-Owned Airports meeting the State Standard for aviation facilities
- Percent of transit fleets meeting condition standard

Infrastructure  
Preservation and  
Maintenance



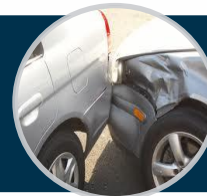
## • DIRECT MEASURES

- Highway fatalities and serious injuries
- Crashes/collisions involving trucks
- Crashes/collisions involving transit vehicles
- Crashes/conditions at rail crossings
- Possible safety-related freight measure to be determined by US DOT

## • INDIRECT MEASURES

- Crashes/collisions on waterways
- % of public airports meeting or exceeding PCI standards and state standard for lighting

Safety



## • DIRECT MEASURES

- % of system with acceptable V/C ratios
- Annual hours of delay from incidents on freeways

## • INDIRECT MEASURES

- Number of freight bottlenecks addressed
- Possible freight transport efficiency measure to be determined by US DOT
- Percent of town centers served by arterial system
- Average travel times by specified origin/destinations in corridors
- Rate of return on state's investment in marine infrastructure

Economic  
Competitiveness



# Draft Performance Measures

- **DIRECT MEASURES**
  - Number of local comprehensive plans addressing land use and transportation needs, esp. mobility
  - Anecdotal improvements to system accessibility
- **INDIRECT MEASURES**
  - Number of parishes with elderly and handicapped transit service

Community  
Development  
and  
Enhancement



- **DIRECT MEASURES**
  - Annual tons of emissions due to mobile sources
- **INDIRECT MEASURES**
  - Percent of public fleets converted to alternative fuels OR gasoline consumption reduced by conversion of public fleets to alternative fuels

Environmental  
Stewardship



# Questions?

- What questions do you have on the Plan and input received so far before moving to Issues?



# Transportation In Louisiana - Overview

- The system
- Current transportation conditions
- Overview of issues
  - Global
  - By Relevant Goal Area

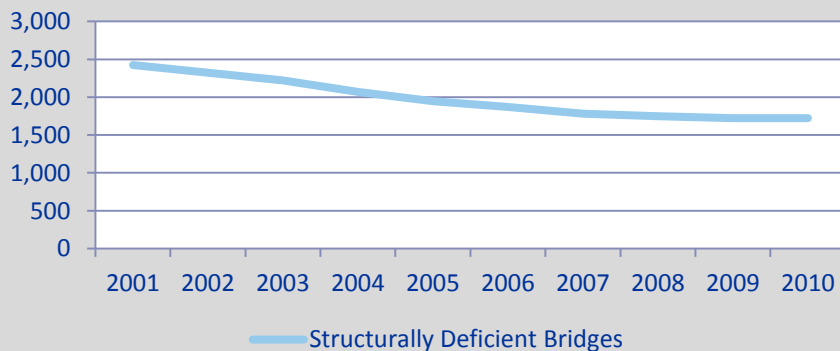
# The System – Key Multimodal Elements

- Highways
- Transit
- Ports And Waterways
- Aviation
- Freight Rail
- Passenger Rail
- Truck Freight
- Non-motorized

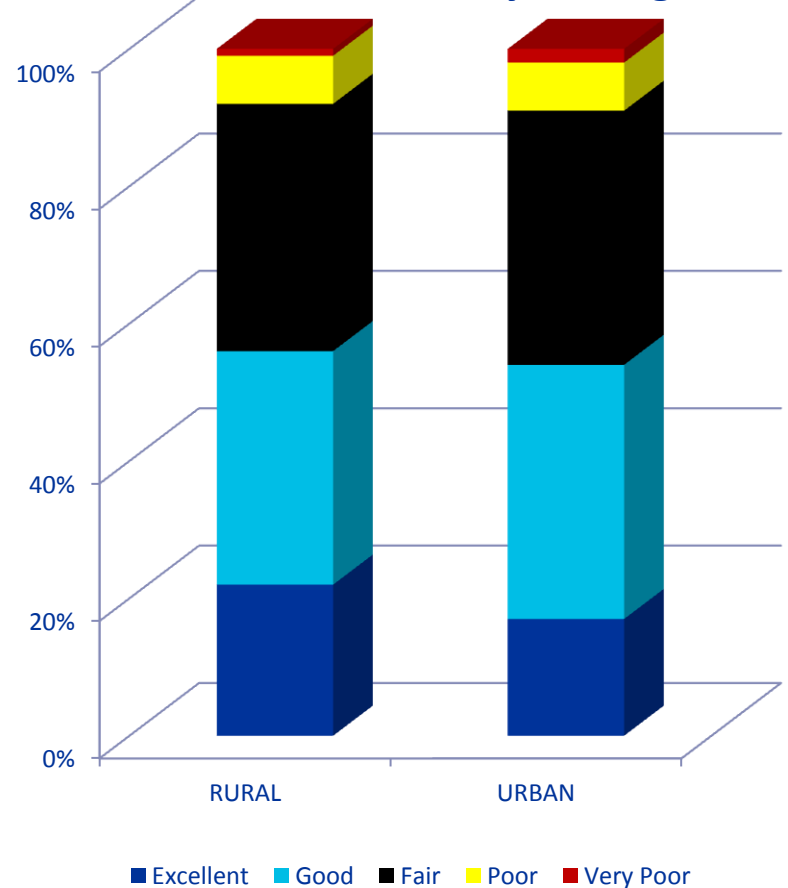
# Highway Conditions

- 16,687 state centerline miles (27% of all roads in Louisiana)
- 11th largest state system
- ~80% rural
- ~2/3 on low volume roads
- 7,963 State bridges (60% of all bridges)
- Maintaining what have is biggest issue

### Structurally Deficient DOTD Bridges

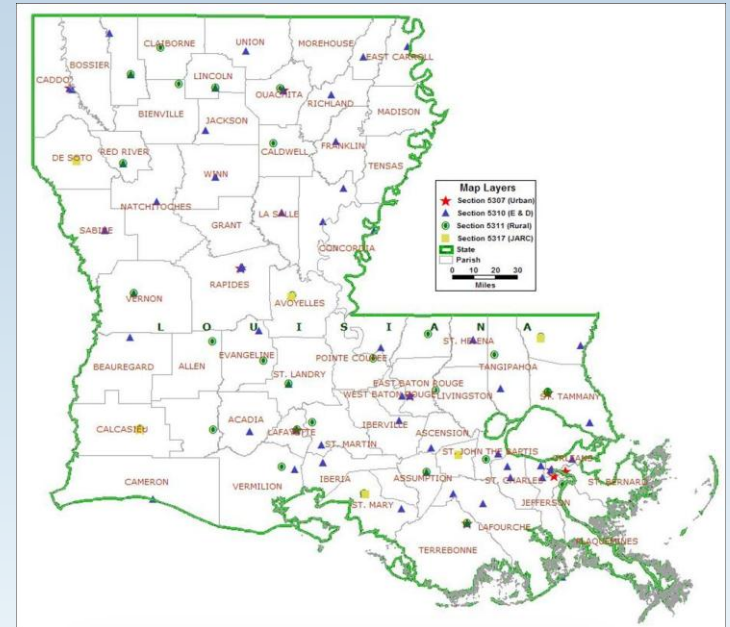


### Pavement Condition by Mileage



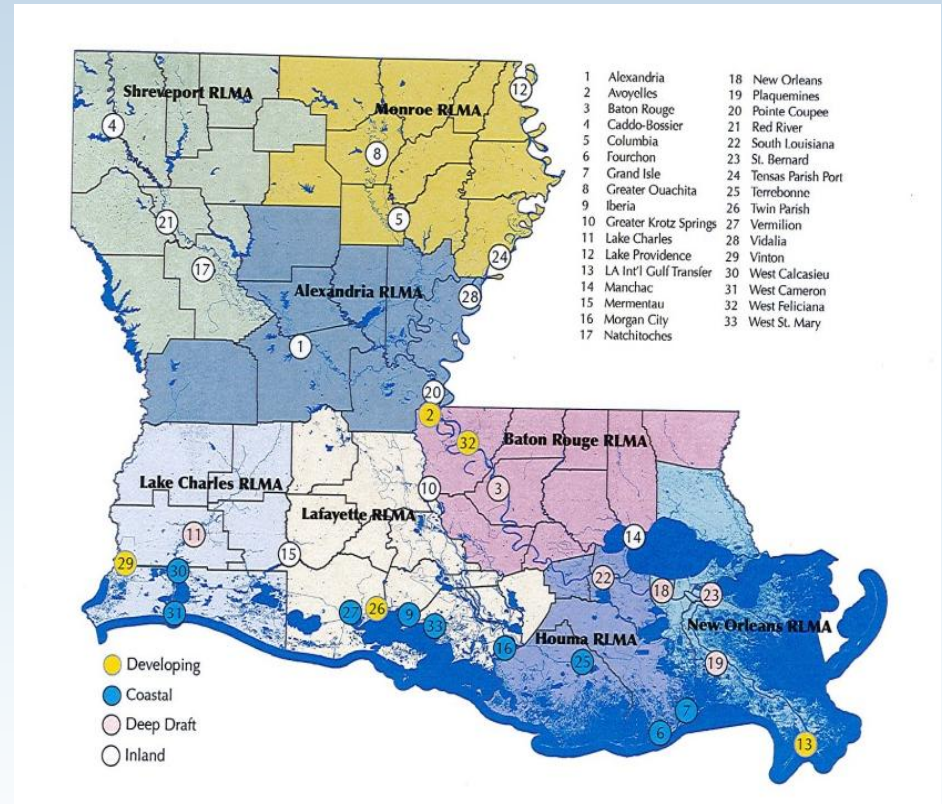
# Transit Conditions

- 33 million rides to Louisiana residents and visitors in 2010
- Rural transit services in 34 parishes, ridership up and down between 2007-2011
- 88 agencies provide elderly and disabled service, ridership roughly the same between 2007-2011
- Continued support for transit for aging population and to provide modal choices is key issue



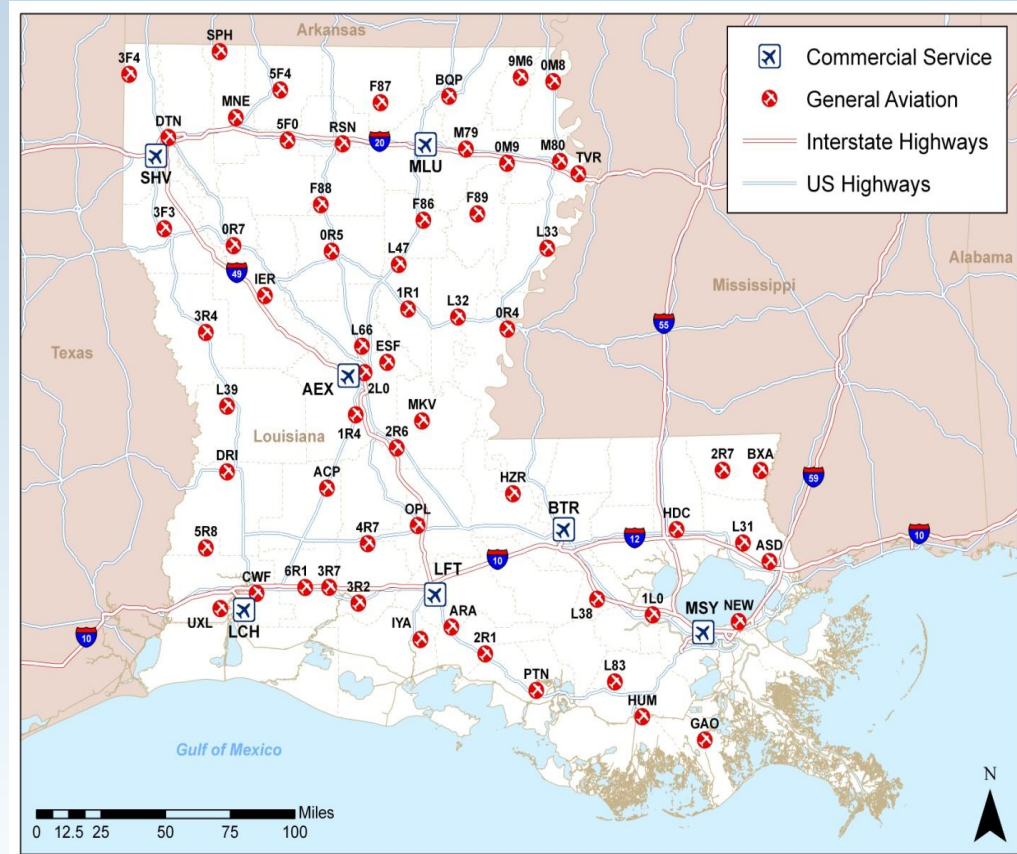
# Ports and Waterways Conditions

- Navigable waterway network over 2,800 miles
- Thirty-three ports within the marine transportation system
- Five deep draft ports rank in the top 10 ports in the US
- Ports primarily serve agriculture, coal and gas transport
- Channel depth, channel maintenance is one of the largest issues



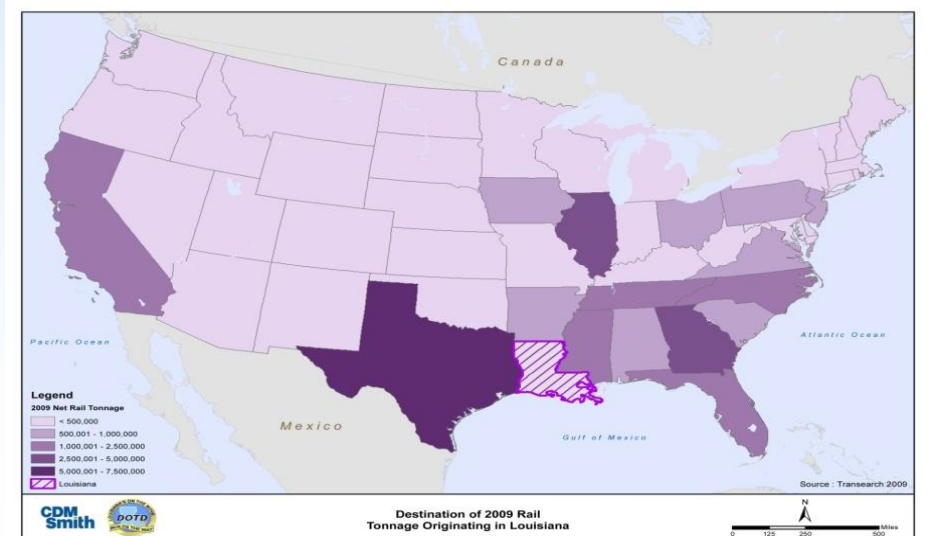
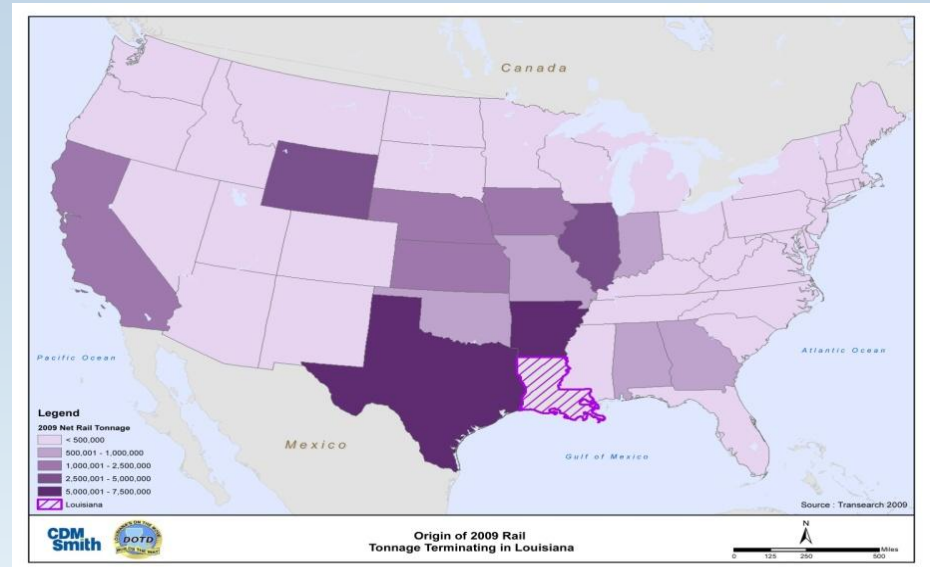
# Aviation Conditions

- Sixty-eight airports
  - Seven – commercial service
  - Three – reliever airports
- Enplanements largely decreased since 2000
- New Orleans and Shreveport handle most cargo
- Issues
  - Land acquisition for Runway Protection Zones
  - Pavement management plan/system



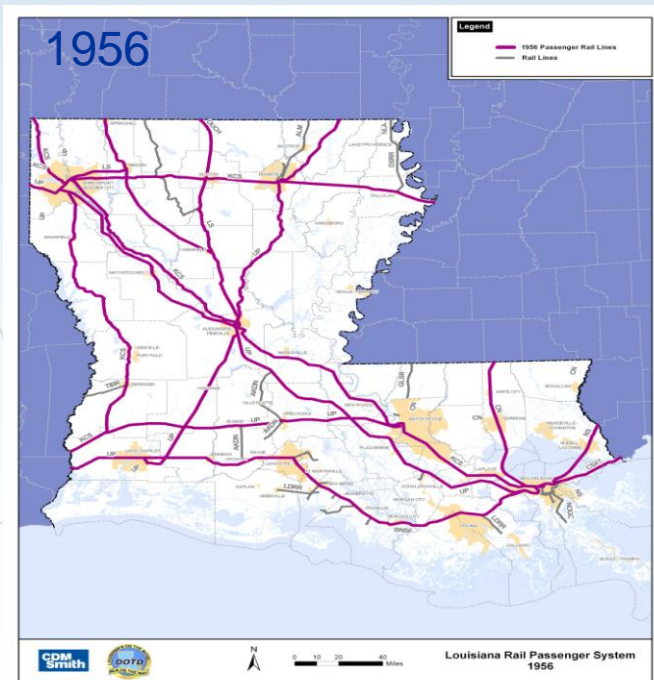
# Freight Rail Conditions

- 6 Railroad Operators, 2,750 miles of track
- Chemical products, paper, petroleum and food products largest volumes shipped
- Nearby states important trading partners
- Rail crossing safety is an issue
  - only 60% of rail crossings at public roads have active warning system



# Passenger Rail Conditions

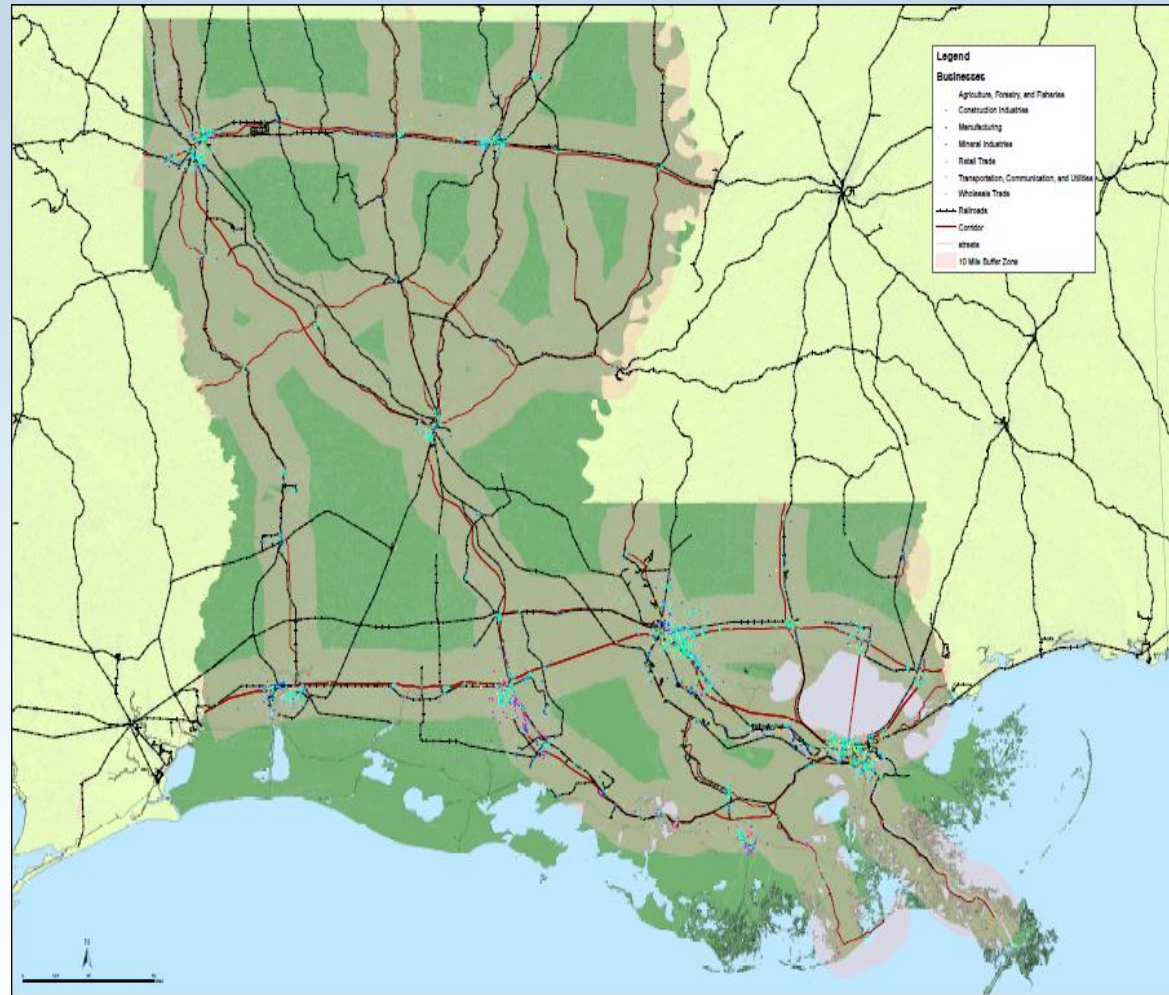
- Three long-distance passenger routes
- Several proposed new routes
- Issue – delays - Train interference top cause of on-time delays, especially in east-west direction





# Truck Freight Conditions

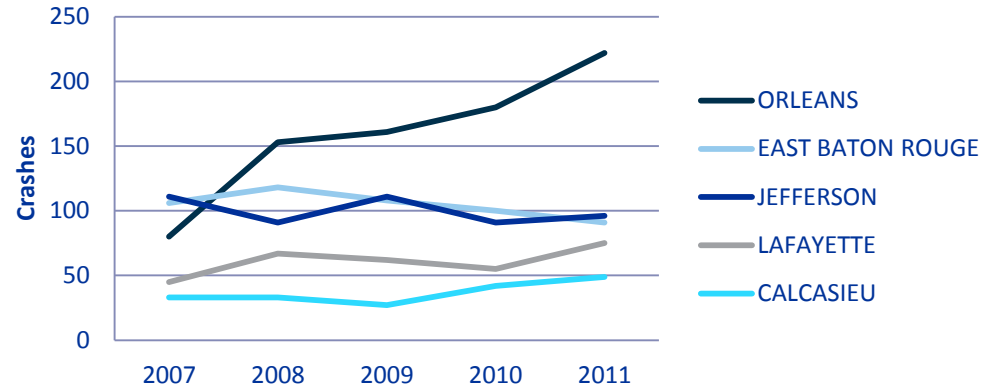
- Vast majority of freight generators near roadway system
- Issues relate to pavement damage on rural roads and bottlenecks in system



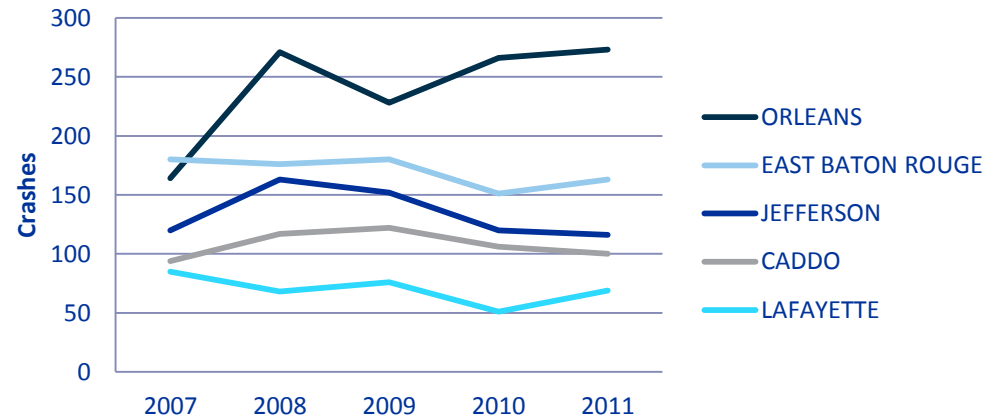
# Non-motorized Conditions

- Issues relate to Complete Streets efforts, connections to modes to increase overall system effectiveness, and safety

### Top 5 Parishes with Bicycle Crashes by Year



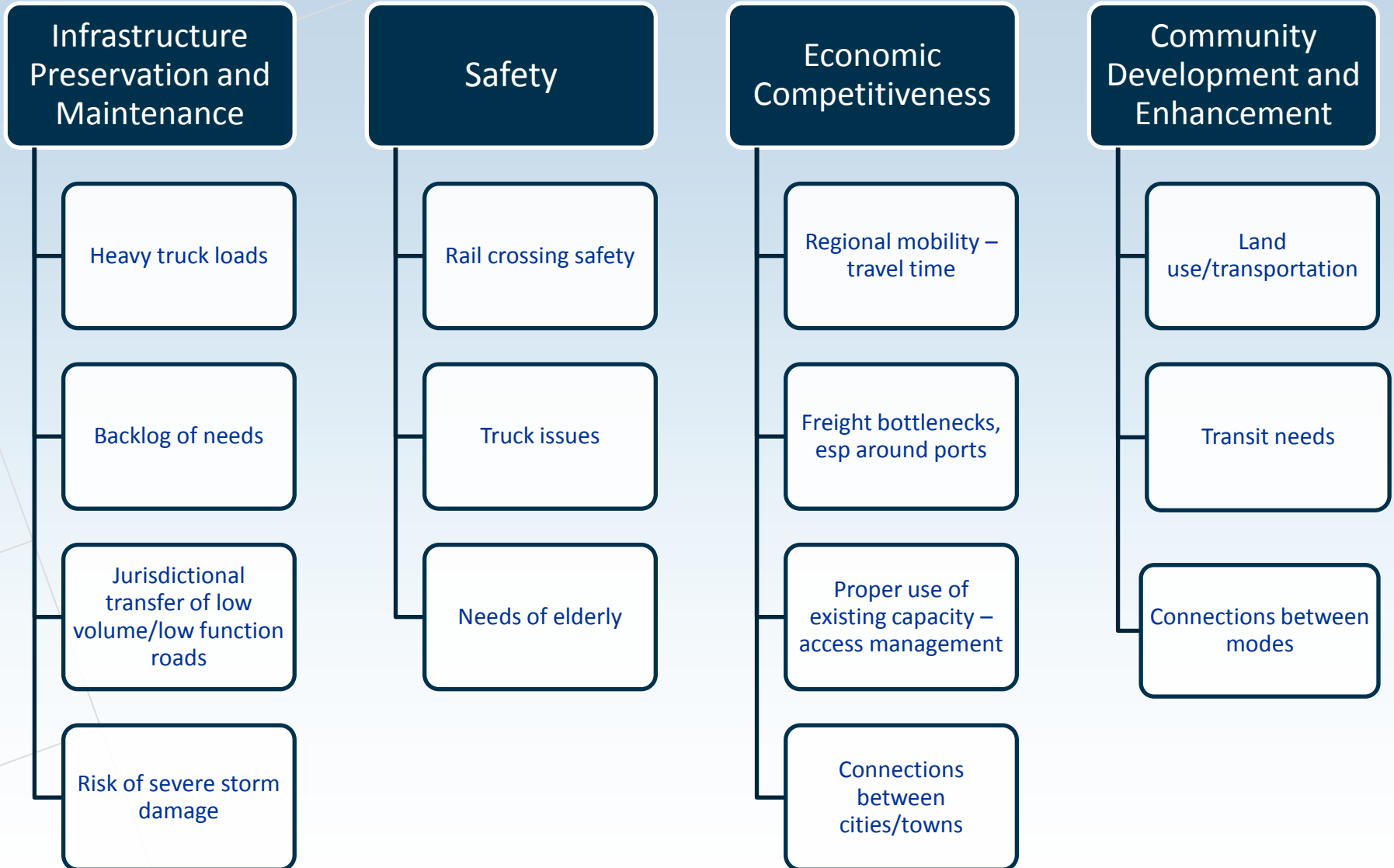
### Top 5 Parishes with Pedestrian Crashes by Year



# Global Issues

- Asset Management: maintaining what exists in good condition
- Mobility: to support and encourage economic growth and quality of life
- Governance: more cooperation and collaboration, especially relative to land use and transportation
- Safety: developing programs and practices that deal with changing times – more elderly, more trucks, etc.
- Revenue: developing sustainable funding options

# Issues By Relevant Goal



# Questions?

- What questions do you have on the Issues before we break into individual Advisory Council Sessions?

# Next

- Brief break
- Advisory Council agenda
  - Welcome and AC Role
  - Discussion of Issues by Topic Area, also identifying any megaprojects
  - Review of Vision, Goals, Objectives and Performance Measures relative to AC topic (will be homework assignment)
  - Handout of 2008 Review and Status Report recommendations (will be homework assignment and will be discussed at next AC meetings)